



CORPORATE BROCHURE



ECD ergonomic comfort design

COMFORT MEETS FUNCTIONALITY.



3109HR Executive Chair
w/Headrest



ERGONOMIC

COMFORT

DESIGN

WELCOME TO ECD

P.2

ERGONOMICS

P.3

COMFORT & DESIGN

P.4

TASK SEATING

P.6

EXECUTIVE SEATING

P.9

CONFERENCE SEATING

P.12

LAB/PRODUCTION SEATING

P.14

MEDICAL EXAMINER

P.17

GUEST/TRAINING/LUNCHROOM

P.18

INTENSIVE USE 24/7

P.19

OUR MISSION TO GREEN

P.20

CUSTOMIZE YOUR CHAIR

P.21



WE ARE ERGONOMIC COMFORT DESIGN

Since its inception in 1993, Ergonomic Comfort Design's (ECD) goal has been to become a leader in its industry by providing a product designed for a healthier work place. ECD was founded under the simple principle of manufacturing the most comfortable chair with the best function and quality in the industry to offer a definite solution for a healthier office work place environment. It is because of this that ECD is the first choice of many corporate America companies for their office wellness programs.

ECD is committed to building a product applying the latest available technology and methods of production. ECD's Ergonomic Office Seating provides you with a "healthy" choice and gives you the correct ergonomic solution to the needs of your "hi-tech" working environment without sacrificing style or design.

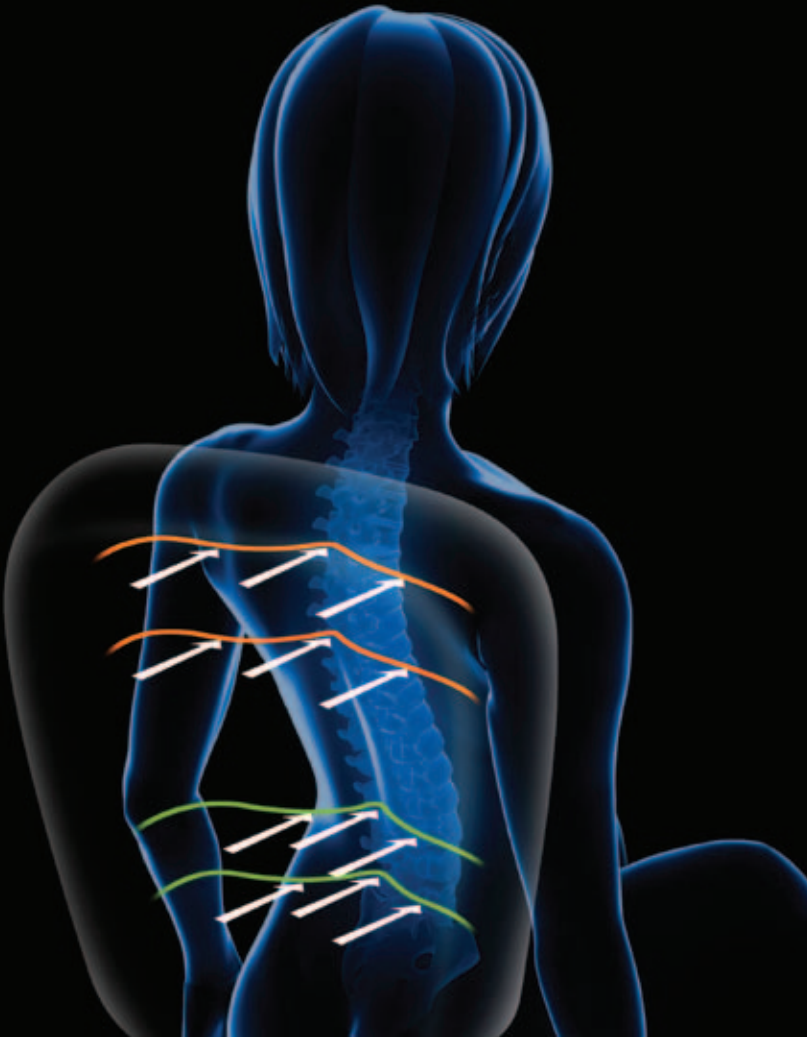
For over 18 years, ECD continues to build products considering its users' needs and evaluations of the product(s). From here, ECD can determine ways to implement those improvements. The company prides itself on being committed to professional, top quality customer service and responsiveness to the customer's needs, guaranteeing full customer satisfaction of each and every product.

HOW ERGONOMICS AFFECT YOU

Not everything that has an 'ergonomic' label is a useful product; some are poorly designed and ultimately do more harm than good. Even well designed ergonomic products can cause problems when not used appropriately or correctly.

At Ergonomic Comfort Design (ECD) we could not agree more with this excellent statement. As the pace of change quickens in office technology and workers spend more and more hours sitting in front of a computer monitor, repetitive stress injuries are increasing at an alarming rate.

But ECD, over the past decade has worked closely with ergonomists, physical therapists, risk managers and health and safety consultants to create seating products that are part of the solution, not part of the problem. ECD was one of the first to install seat sliders on chairs, width and height adjustable arms, thoracic support in the back cushions, memory foam in the seat cushions, and one of the first to offer petite and large scale sized chairs for the smaller and larger workers.



COMPLETE BACK SUPPORT

THORACIC SUPPORT- ECD'S Thoracic foam in the upper back supports the spine between the shoulder blades, encouraging a 'shoulders back' posture.

LUMBAR SUPPORT- ECD's built in lumbar support relieves stress from your lower back muscles by ensuring that you maintain proper posture even when you have to remain seated for an extended period.



CERVICAL SUPPORT-

Cervical support (head rest) can be part of an effective management of neck muscle weakness to help prevent complications of pain and injury.



Our mission of a more comfortable chair is what sets us apart from other manufacturers – from memory foam to full back support.

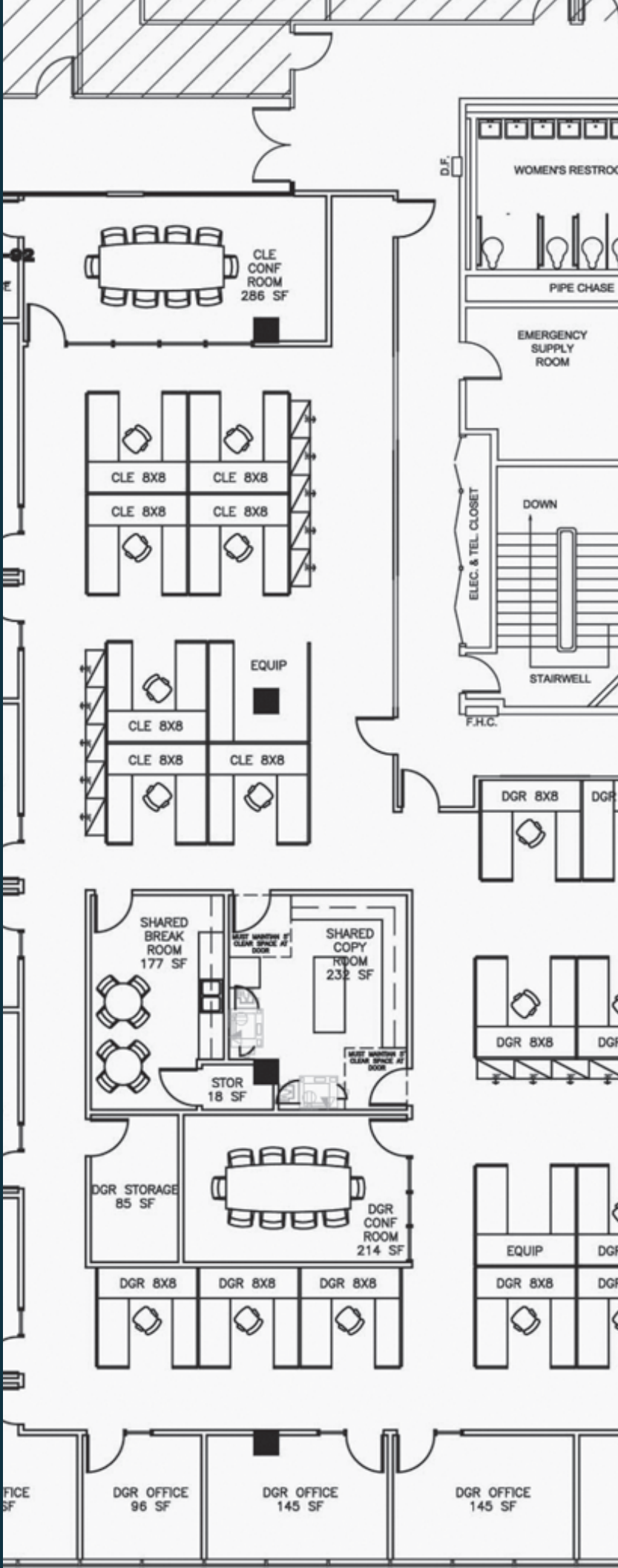
COMFORT

THE RIGHT BALANCE BETWEEN

Seating doesn't have to be plain. We design all of our chairs to compliment every office environment.

DESIGN





ECD FOR PROJECTS

ECD will work directly with designers, specifiers, and architects to help create your desired office environment.

KEY FEATURES FOR PROJECTS INCLUDE:

- Flexibility to fit all sizes
- Chairs ship fully assembled
- Volume Discounts
- Short Lead Times
- Custom Capabilities
- End User Training After Install
- Prevent Ergonomic Issues. We Get It Right The First Time.

CUSTOMERS OWN MATERIAL (COMs) MADE EASY.

SPECIFY ANY FABRIC AND ECD WILL 'GRADE IT IN' AND BUY THE FABRIC DIRECT.



TASK

Task chairs are designed and built for the users comfort in mind. These chairs are for extremely long hours of use and are multi-adjustable to fit each user's needs. Our task chairs are equipped with long lasting high quality material, at an affordable price



202JS Low Back

200JS ALEXIS SERIES

Smart, Classic, Comfortable. The Alexis 200JS Series was the first product to truly raise the ergonomic bar by adding comfort to the many necessary adjustments required for the computer-intensive worker. This ultimate chair design was the result of many hours of research by corporate ergonomists along with health and safety individuals.

Standard Features

- Independent seat & backrest adjustment
- Euro pivot arms (width, height, pivot)
- Adjustable seat depth (seat slider)
- Pneumatic seat height adjustment
- Waterfall seat
- Ratchet back height adjustment
- Thoracic back foam



1306JS Mid-Back



1309JS High Back

1300JS VIVE LITE SERIES

In a rapidly changing office environment where speed, efficiency and comfort are essential, Vive Lite is today's ergonomic answer. Vive Lite Offers clean, transitional design and soft yet supportive feel.

Standard Features

- Independent seat & back adjustments
- Adjustable arms (height & width)
- Pneumatic seat height adjustment
- Ratchet back height adjustment
- Adjustable seat depth (seat slider)
- Thoracic back foam
- Water fall seat



1406JS Mid-Back



1409JS High Back

1400JS VIVE SERIES

Vive brings unparalleled comfort and function to the working environment. Never has an ergonomic series combined correct foam and form with a mechanism that supports the body in multiple positions.

Standard Features

- Full function executive tilt mechanism
- Ratchet back height adjustment
- Seat depth adjustment (seat slider)
- Pneumatic seat height adjustment
- Memory foam on the seat
- Thoracic back foam
- Multi-function arms (up, down, in, out, pivot, back & forth)



1506JS Mid-Back



1509JS High Back

1500JS QUEST SERIES

Quest is defined as a search of pursuit made in order to obtain something. For ECD's 1500 Quest Series, the pursuit was to create the most comfortable and ergonomic office chair in the industry. ECD Developed this family of chairs to give each user unparalleled support and comfort. Each chair puts more support down the center of the back, in the thorax area to keep the proper curvature of the spine while sitting properly upright.

Standard Features

- Full function executive tilt mechanism
- Ratchet back height adjustment
- Seat depth adjustment (seat slider)
- Pneumatic seat height adjustment
- Memory foam on the seat
- Thoracic back foam
- Multi-function arms (up, down, in, out, pivot, back & forth)



1606 Mid-Back



1609 High Back

1600 TRUDEAU SERIES

The Trudeau Series captures the best features available all in one chair: memory foam seat cushion, thoracic foam back cushion, euro pivot arms that lower to allow user for easy access to the keyboard and mouse tray, and a slim, sleek European design for a great look as well.

Standard Features

- Full function executive tilt mechanism
- Ratchet back height adjustment
- Seat depth adjustment (seat slider)
- Pneumatic seat height adjustment
- Memory foam on the seat
- Thoracic back foam
- Euro pivot arms (width, height, & pivot)



2506JSPLPXT Mid-Back



2509JSPLPXT High Back

2500 QUEST SERIES

The 2500 Series is a cousin to the highly popular Quest 1500 Series, but we incorporate euro pivot arms that lower to allow user for easy access to the keyboard and mouse tray and an adjustable lumbar support all standard. The 2500 series is the task chair of task chairs.

Standard Features

- Full function executive tilt mechanism
- Ratchet back height adjustment
- Seat depth adjustment (seat slider)
- Pneumatic seat height adjustment
- Memory foam on the seat
- Thoracic back foam
- Euro pivot arms (width, height, & pivot)
- Adjustable lumbar support



2906

2900 QT SERIES

ECD's 2900 Series adjusts fully to support both task and Conference Room assignments. Highly engineered features for seat depth adjustment, back tilt, back angle, seat height, adjustable lumbar support and height adjustable arms are incorporated into a clean, contemporary Mesh Back design. When you consider comfort, quality and value, the 2900 series provides a smart solution.

Standard Features

• Full function heavy-duty executive tilt mechanism • Height adjustable arms • Pneumatic seat height adjustment • Mesh back with 6-point adjustment lumbar support • Seat depth adjustment (seat slider) • Molded high resilient foam



Padded Lumbar Support



Shown w/black mesh



3109

3100 BELLA SERIES

Beautiful, Comfortable, Classic. The Bella 3100 Series incorporated the "look" of today's office, with the comfort for which ECD has been known for throughout the years.

Standard Features

• Mesh back • Synchronized mechanism front pivot • Seat depth adjustment (seat slider) • Side tension adjustment • Fully adjustable lumbar support with in, out, up, down adjustment • Height & width adjustable arms • Molded high resilient foam



Padded Lumbar Support



Shown w/black mesh



3309

3300 VARIANT SERIES

Besides beautiful styling, superior functionality, and ergonomic comfort, Variant is particularly distinguished by a simple and sharp design in tune with contemporary demands. Variant's synthesis of "cutting-edge design and first rate technology" will revitalize your office space.

Standard Features

• All mesh comfort • Seat height control • Seat depth adjustment (seat slider) • Synchro-linked control • Cable operated controls • Multi-function arm rests (up, down, in, out) • Waterfall front edge with padded foam



MW202

MW200 SERIES

Office seating should be comfortable, good looking, ergonomic and affordable. ECD's MW200 series is that and more. Designed for the computer- intensive user, the MW200 series offers adjustments such as seat angle, seat height, back height and height adjustable arms. A durable, high performance chair at a practical price.

Standard Features

- Independent seat & back adjustments
- Height adjustable arms
- Pneumatic seat height adjustment
- Waterfall seat
- Thoracic back foam



EXECUTIVE

Our line of executive and management chairs offer a genuine blend of professionalism, personality, and prestige. Designed to compliment any private office setting and developed with comfort in mind.

2700 TUSCANY SERIES

The Tuscany Collection by ECD, boldly incorporates classic black leather and an extraordinary yet highly functional ergonomic design making these leather office chairs a perfect executive chair or conference room chairs.

Standard Features

- New generation synchronized knee tilt control with 5 position "anti-kick" lock
- Heavy duty die cast base with added scuff end caps
- Top Grain Leather (No vinyl on back and sides)
- Memory Foam on seat for extra comfort
- Class IV cylinder (heavy duty)
- Contoured reinforced inner-structure with waterfall seat front
- 55mm casters



2719





1509JSHR w/Headrest



1509JS High Back

1500JS QUEST SERIES

Quest is defined as a search of pursuit made in order to obtain something. For ECD's 1500 Quest Series, the pursuit was to create the most comfortable and ergonomic office chair in the industry. ECD Developed this family of chairs to give each user unparalleled support and comfort. Each chair puts more support down the center of the back, in the thorax area to keep the proper curvature of the spine while sitting properly upright.

Standard Features

- Full function executive tilt mechanism
- Ratchet back height adjustment
- Seat depth adjustment (seat slider)
- Pneumatic seat height adjustment
- Memory foam on the seat
- Thoracic back foam
- Multi-function arms (up, down, in, out, pivot, back & forth)



1609JSXTHR w/Headrest



1609JSXT High Back

1600 TRUDEAU SERIES

The Trudeau Series captures the best features available all in one chair: memory foam seat cushion, thoracic foam back cushion, euro pivot arms that lower to allow user for easy access to the keyboard and mouse tray, and a slim, sleek European design for a great look as well.

Standard Features

- Full function executive tilt mechanism
- Ratchet back height adjustment
- Seat depth adjustment (seat slider)
- Pneumatic seat height adjustment
- Memory foam on the seat
- Thoracic back foam
- Euro pivot arms (width, height, & pivot)



2509JSLPXT

2500 QUEST SERIES

The 2500 Series is a cousin to the highly popular Quest 1500 Series, but we incorporate euro pivot arms that lower to allow user for easy access to the keyboard and mouse tray and an adjustable lumbar support all standard. The 2500 series is the task chair of task chairs.

Standard Features

- Full function executive tilt mechanism
- Ratchet back height adjustment
- Seat depth adjustment (seat slider)
- Pneumatic seat height adjustment
- Memory foam on the seat
- Thoracic back foam
- Euro pivot arms (width, height, & pivot)
- Adjustable lumbar support



707JSLXTHR w/headrest



707JSLXT

700 RENAISSANCE SERIES

The Renaissance 700 series is an example of something good getting even better. Today the Renaissance Series with its classic styling and plush feel transcends to being the premier ergonomic executive family of chairs.

Standard Features

- Heavy-duty full function executive tilt mechanism
- Adjustable semi-loop arms that adjust vertically & horizontally
- Pneumatic height adjustment
- Adjustable lumbar support
- Seat depth adjustment (seat slider)
- Multi-dense formed high resilient foam



MEET THE LATEST BLEND OF

ERGONOMIC

COMFORT

DESIGN

3300 VARIANT SERIES

Besides beautiful styling, superior functionality, and ergonomic comfort, Variant is particularly distinguished by a simple and sharp design in tune with contemporary demands. Variant's synthesis of "cutting-edge design and first rate technology" will revitalize your office space.



3309 w/Headrest

CLOCKWISE:

1. Cable operated Controls
2. Beautiful Design
3. Tension knob on the side
4. Headrest adjusts up/down & pivots
5. Waterfall front edge with padded foam



CONFERENCE

Conference seating does not require the need for advanced adjustability but does require professionalism and comfort. Our line of conference seating spans from high end boardroom to stackable presentation seating.



316C

300XT FAST TRACK SERIES

In a rapidly changing office environment where speed, efficiency and comfort are essential, Fast-Track is today's ergonomic answer. Fast-Track Offers clean, transitional design and soft yet supportive feel.

Standard Features

- C-loop fixed arms
- Pneumatic height adjustment
- Waterfall seat edge
- Rocking/Non-rocking control



1616RCJKT

1600 TRUDEAU SERIES

The Trudeau Series captures the best features available all in one chair: memory foam seat cushion, thoracic foam back cushion, the smoothest and quietest synchronized control we've ever seen, and a slim, sleek European design for a great look as well.

Standard Features

- C-loop fixed arms
- Pneumatic height adjustment
- Waterfall seat edge
- Rocking/Non-rocking control
- Memory foam on seat



2716



2719

2700 TUSCANY SERIES

The Tuscany Collection by ECD, boldly incorporates classic black leather and an extraordinary yet highly functional ergonomic design making these leather office chairs a perfect executive chair or conference room chairs.

Standard Features

- New generation synchronized knee tilt control with 5 position "anti-kick" lock
- Heavy duty die cast base with added scuff end caps
- Top Grain Leather (No vinyl on back and sides)
- Memory Foam on seat for extra comfort
- Class IV cylinder (heavy duty)
- Contoured reinforced inner-structure with waterfall seat front
- 55mm casters



2916C

2916 QT CONFERENCE CHAIR

ECD's 2900 Series adjusts fully to support both task and Conference Room assignments. Highly engineered features for seat height, adjustable lumbar support and height adjustable arms are incorporated into a clean, contemporary Mesh Back design. When you consider comfort, quality and value, the 2900 series provides a smart solution.

Standard Features

- Up/Down arms • Pneumatic height adjustments • Knee tilt rocking - non rocking mechanism • adjustable lumbar support



Shown w/Vinyl and black mesh back



3109



3109HR

3100 BELLA SERIES

Beautiful, Comfortable, Classic. The Bella 3100 Series incorporated the "look" of today's office, with the comfort for which ECD has been known for throughout the years.

Standard Features

- Mesh back
- Synchronized mechanism front pivot
- Seat depth adjustment (seat slider)
- Side tension adjustment
- Fully adjustable lumbar support with in, out, up, down adjustment
- Height & width adjustable arms
- Molded high resilient foam



3309 w/Headrest



3309

3300 VARIANT SERIES

Besides beautiful styling, superior functionality, and ergonomic comfort, Variant is particularly distinguished by a simple and sharp design in tune with contemporary demands. Variant's synthesis of "cutting-edge design and first rate technology" will revitalize your office space.

Standard Features

- All mesh comfort
- Seat height control
- Seat depth adjustment (seat slider)
- Synchro-linked control
- Cable operated controls
- Multi-function arm rests (up, down, in, out)
- Waterfall front edge with padded foam



LAB/PRODUCTION TELLER/ESD/ CLEAN ROOM

Staying sanitary doesn't mean sacrificing design and comfort. Our extensive line of lab and production seating offers variations and adjustability to fit any need of its user.



MW204



MW205
Shown w/optional chrome base

MW200 SERIES

Office seating should be comfortable, good looking, ergonomic and affordable. ECD's MW200 series is that and more. Designed for the computer-intensive user, the MW200 series offers adjustments such as seat angle, seat height, back height and height adjustable arms, with natural lumbar support. A durable, high performance stool at a practical price.

Standard Features

- Independent seat & back adjustment
- Height adjustable arms
- Pneumatic seat height adjustment
- Waterfall seat
- Thoracic back foam



204JS



205JS Petite
Shown w/optional chrome base

200JS ALEXIS SERIES

Smart, Classic, Comfortable. The Alexis 200JS Series was the first product to truly raise the ergonomic bar by adding comfort to the many necessary adjustments required for the computer-intensive worker. This ultimate chair design was the result of many hours of research by corporate ergonomists along with health and safety individuals.

Standard Features

- Independent seat & back adjustment
- Adjustable arms (width, height, & pivot)
- Adjustable seat depth (seat slider)
- Pneumatic seat height adjustment
- Water fall seat
- Ratchet back height adjustment
- Thoracic back foam



1404JS
Shown w/optional chrome base



1405JS

1400JS VIVE SERIES

Vive brings unparalleled comfort and function to the working environment. Never has an ergonomic series combined correct foam and form with a mechanism that supports the body in multiple positions.

Standard Features

- Full function executive tilt mechanism
- Ratchet back height adjustment
- Seat depth adjustment (seat slider)
- Pneumatic seat height adjustment
- Memory foam on the seat
- Thoracic back foam
- Multi-function arms (up, down, in, out, pivot, back & forth)

1500JS QUEST SERIES

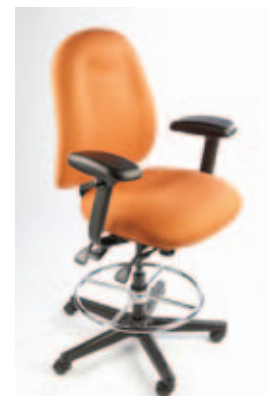
Quest is defined as a search of pursuit made in order to obtain something. For ECD's 1500 Quest Series, the pursuit was to create the most comfortable and ergonomic office chair in the industry. ECD Developed this family of chairs to give each user unparalleled support and comfort. Each chair puts more support down the center of the back, in the thorax area to keep the proper curvature of the spine while sitting properly upright.

Standard Features

- Full function executive tilt mechanism
- Ratchet back height adjustment
- Seat depth adjustment (seat slider)
- Pneumatic seat height adjustment
- Memory foam on the seat
- Thoracic back foam
- Multi-function arms (up, down, in, out, pivot, back & forth)



1504JS



1505JS



1604



1605

1600 TRUDEAU SERIES

The Trudeau Series captures the best features available all in one chair: memory foam seat cushion, thoracic foam back cushion, euro pivot arms that lower to allow user for easy access to the keyboard and mouse tray, and a slim, sleek European design for a great look as well.

Standard Features

- Full function executive tilt mechanism
- Ratchet back height adjustment
- Seat depth adjustment (seat slider)
- Pneumatic seat height adjustment
- Memory foam on the seat
- Thoracic back foam
- Euro pivot arms (width, height, & pivot)



2905



2904

2900 QT SERIES

ECD's 2900 Series adjusts fully to support both task and Conference Room assignments. Highly engineered features for seat depth adjustment, back tilt, back angle, seat height, adjustable lumbar support and height adjustable arms are incorporated into a clean, contemporary Mesh Back design. When you consider comfort, quality and value, the 2900 series provides a smart solution.

Standard Features

- Full function heavy-duty executive tilt mechanism
- Height adjustable arms
- Pneumatic seat height adjustment
- Mesh back with 6-point adjustment lumbar support
- Seat depth adjustment (seat slider)
- Molded high resilient foam



3105

Shown w/optional chrome base



3104

Shown w/optional chrome base

3100 BELLA SERIES

Beautiful, Comfortable, Classic. The Bella 3100 Series incorporated the "look" of today's office, with the comfort for which ECD has been known for throughout the years.

Standard Features

- Mesh back
- Synchronized mechanism front pivot
- Seat depth adjustment (seat slider)
- Side tension adjustment
- Fully adjustable lumbar support with in, out, up, down adjustment
- Height & width adjustable arms
- Molded high resilient foam



2300 LAB/ PRODUCTION

This chair/stool is perfect for production areas as well as medical labs, medical exam rooms, and anywhere space is at a premium.

Standard Features

- Full function executive tilt mechanism
- Ratchet back adjustment
- Contoured seat pan for extra comfort
- Natural lumbar support on backrest
- Seat depth adjustment (seat slider)

GLIDES
AVAILABLE ON
ALL CHAIRS &
STOOLS





MEDICAL EXAMINER

The comfort and adjustability of these chairs and stools make them a perfect fit for hospitals and labs.



MW201



MW202



MW204
Shown w/optional chrome base

MW200 SERIES

Office seating should be comfortable, good looking, ergonomic and affordable. ECD's MW200 series is that and more. Designed for the computer-intensive user, the MW200 series offers adjustments such as seat angle, seat height, back height and height adjustable arms, with natural lumbar support. A durable, high performance chair/stool at a practical price.

Standard Features

- Independent seat & back adjustment
- Height adjustable arms
- Pneumatic seat height adjustment
- Waterfall seat
- Thoracic back foam



2201



2204
Shown w/optional chrome base

2200 EXAM/LAB

This chair/stool is perfect for production areas as well as medical exam rooms and anywhere space is at a premium.

Standard Features

- Independent seat and backrest adjustment
- Forward seat tilt adjustment
- Pneumatic seat height adjustment
- Hard floor bracking casters



GUEST/TRAINING/ LUNCHROOM

Guest/Training/Lunchroom seating does not require the need for advanced adjustability but does require professionalism and comfort. Our line of Guest/Training/Lunchroom seating spans from high end boardroom to stackable presentation seating.



1101 Guest Chair



1102 Guest Chair

1100 SERIES

Guest seating should not be complicated. It should be clean, functional, comfortable, and a great value. ECD's 1100 series is right on target.



- Available with or without casters



2712 Guest Chair



312G Guest Chair



2912G Guest Chair



1612G Guest Chair



1100 Series are Stackable

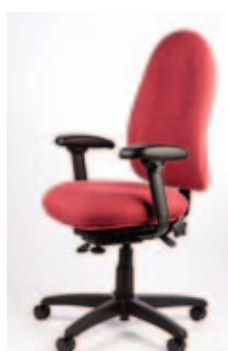
INTENSIVE USE 24/7 BIG & TALL



506JSXTLS
(Large Scale)



509JSXTXLS
(Extra Large Scale)



506JSXT20

500 METROPOLIS SERIES

Our first priority in the development of this series was to introduce a versatile task/management ergonomic chair capable of satisfying the needs of the demanding sector of intensified workload 24 hour continuous use or 911 call centers. This series is offered in standard, large scale and extra large scale for the above average population. Our large-scale chairs are rated at 350 pound capacity and our Extra Large Scale chairs are rated at 450 pounds.



707JSLXT



707JSLXTHR



711JSLXT

700 RENAISSANCE SERIES

The Renaissance 700 series is an example of something good getting even better. Today the Renaissance Series with its classic styling and plush feel transcends to being the premier ergonomic executive family of chairs.

Standard Features

- Heavy-duty full function executive tilt mechanism
- Adjustable semi-loop arms that adjust vertically & horizontally
- Pneumatic height adjustment
- Adjustable lumbar support
- Seat depth adjustment (seat slider)
- Multi-dense formed high resilient foam



1509JS22



2509JSLPXT22



1506JSXTLSHR



1506JSXTLSHR
Comes with optional
fold-away arms.

OUR MISSION TO STAYING GREEN

Over the Years, Ergonomic Comfort Design, Inc. has established its name in the office furniture market by providing one of the most comfortable, high quality and functional ergonomic chairs in the industry. We also pride ourselves in our efforts of producing safer products that follow the guidelines of a cleaner and healthier in-door air quality for a better office environment.

Material Sourcing:

As part of our safety process, we require from our main suppliers a written certification confirming that their components are free from harmful chemicals.

Fabric

We have partnered with various textile companies to bring our customers options of recyclable fabrics.

Manufacturing

ECD uses manufacturing processes that are friendly and non-threatening to our environment. Materials used in the production process contain no Ozone Depleting Substances (ODSs) (chlorofluorocarbons (CFCs) or hydrochlorofluorocarbons (HCFCs)). Our systems are in full compliance with EPA requirements concerning Clean Air and Clean Water. We recycle scrap metal, paper and corrugated waste. We work diligently with our local power company to determine effective ways to conserve energy in our operations.

Delivery & Disposal

Our Chairs are shipped using reusable packaging materials such as blankets and other such materials as recyclable cardboard boxes. Our chairs are designed to last well over 10 years meaning our products limit the disposal and repurchase cycle that cause many environmental problems.



WE ARE PROUD TO BE MAS CERTIFIED GREEN

WHAT IS MAS CERTIFIED GREEN?

MAS Certified Green is a registered trademark to delineate your low VOC emitting products in the marketplace so that purchasers and specifiers of those products know that they can earn credits in sustainability programs like LEED and California CHP program. It's impossible today to read a paper or watch a newscast and not encounter the term "green" as a metaphor for sustainability, environmental stewardship and improved indoor air quality.

WHAT IS LEED?

LEED stands for Leadership in Energy and Environmental Design. The United States Green Building Council rating system awards LEED certification, which is the internationally accepted benchmark for the design, construction, and operation of green buildings. All ECD products can contribute toward one or more credits in the LEED for Commercial Interiors (CI) category.

WHAT DOES THIS MEAN FOR YOU?

Our products will help you to meet your environmental goals. Even if you don't want to get LEED certification, you can rest assured that our products will make an important contribution to the quality of any work environment.

Going beyond Seating

Ergonomic Comfort Design recently worked with Southern California Edison to stretch our green initiative with their Integrated Lighting Solutions program. By retrofitting our corporate office and factory with new energy efficient lighting technology we are able to reduce our energy usage, and create a more energy efficient work environment.

CUSTOMIZE YOUR CHAIR

With ECD's myriad of options you will be able to build just the right chair for your environment. These are just some of the options available:

ARM RESTS

ECD offers a wide variety of arm rest options. Your chair can be fitted with any of the below arms to better suit individuals needs.



UP/DOWN IN/OUT



EURO PIVOT



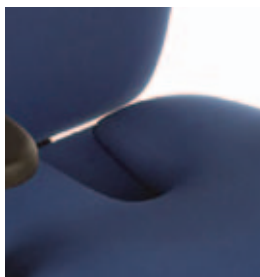
K-12



FOLD-AWAY



SCISSOR



TAILBONE CUT-OUT

Seat foam specially cut for coccyx relief.



MEMORY FOAM

High density with memory foam offers the ultimate in comfort.



ADJUSTABLE LUMBAR SUPPORT

Provides extra lumbar support when needed.



CONTOUR SEAT

Contour seat provides extra comfort.



STOOL KITS

Most chairs can be converted into stool with this kit.



CHROME BASES & HARD FLOOR CASTERS

CAL TB133

All ECD chairs can be CAL TB133 Compliant.

ESD

ECD offers electrostatic discharge series for sensitive electronic applications.





ECD ergonomic comfort design

www.ecdonline.net | 9140 Stellar Court #B Corona CA 92883 | 951.277.1558